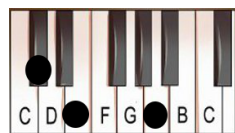


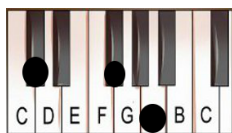
STAND BY ME

BEN E KING, JERRY LEIBER AND MIKE STOLLER

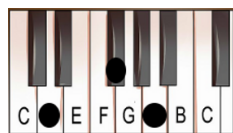
Arr: P.Brown (2017)



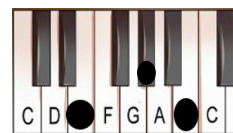
A



F#m



D



E

Bass Guitar Riff

E G# A A E G# A A A G# F# F# E

5 F# F# F#E D D D F# E E E G# A A E G#

9 Verse: **A** **F#m**

A C# E F# C# E A B C# B

When the night has come and the land is

D **E** **A**

13 A A B C# A A C# B A A B A

dark and the moon is the only light you'll see

A
F#m

17

C#E F# C#E F# A B C# C#B A A B
 No I won't be afraid No I wont be a fraid Justas

D
E
A

22

C# A A C# B A C# B A E F# E A G#
 long as you stand stand by me Now Dar ling Darl ing

Chorus:

A
F#m

26

F# E F# F# F# F# E F# C# A C# B A C#
 Stand by me Ohh Stand by me Oh

D
E
A

30

B A C# B A C# B A
 stand Stand by me Stand by me