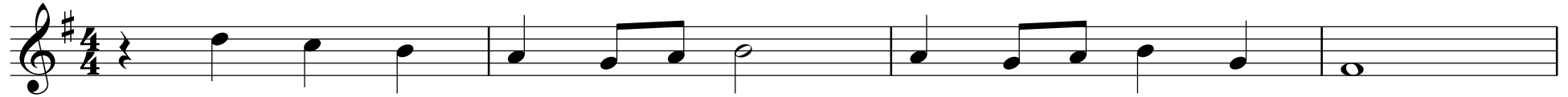


# SECOND STAR TO THE RIGHT

From Peter Pan

Sammy Cahn and Sammy Fain

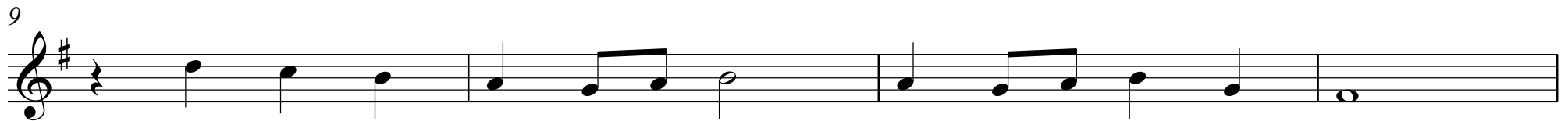
Arr: P.Brown (2019)



**D C B A G A B A G A B G F#**  
The sec ond star to the right shines in the night for you



**E F# A G F# G D D C F# E F# D**  
to tell you that the dreams you plan real ly can come true



**D C B A G A B A G A B G F#**  
The sec ond star to the right shine's with a light that's rare



**E F# A G F# G D D B C A E F# G**  
and if it's nev er land you need it's light will lead you there

17

G E D C C B F B A E A G D  
Twink le twink le litt le star so I'll know where you are

21

G E D C C B F# F# E B G D C E F#  
gleam ing in the skies a bove lead me to the one who loves me

25

D C B A G A B A G A B G F#  
And when you bring him my way each time we say good night

29

E F# A G F# G D D B C A E F# G  
we'll thank the lit tle star that shines the sec ond from the right